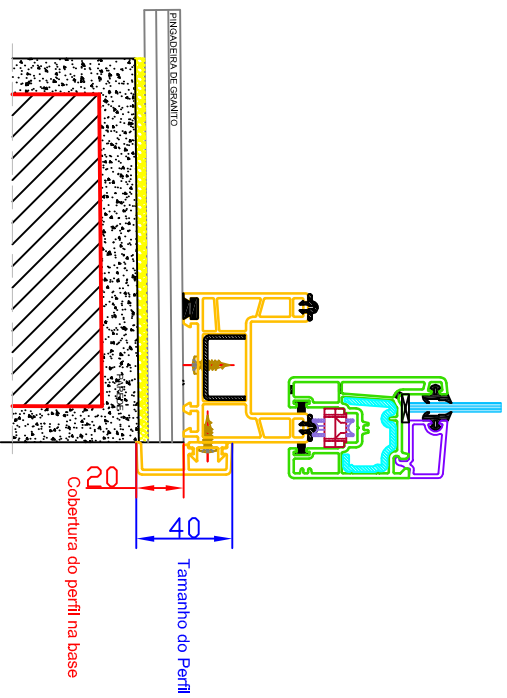
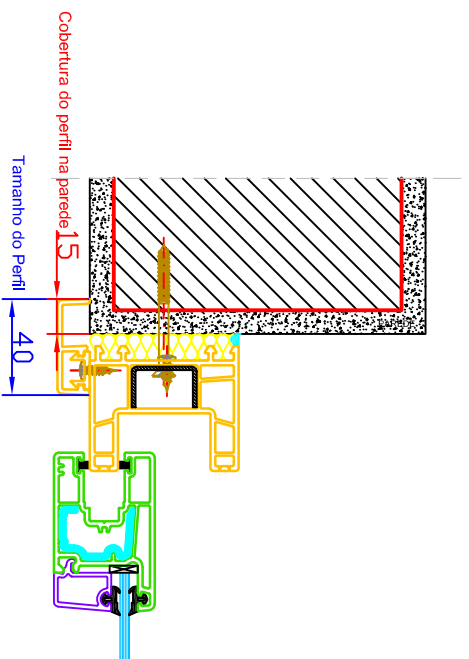


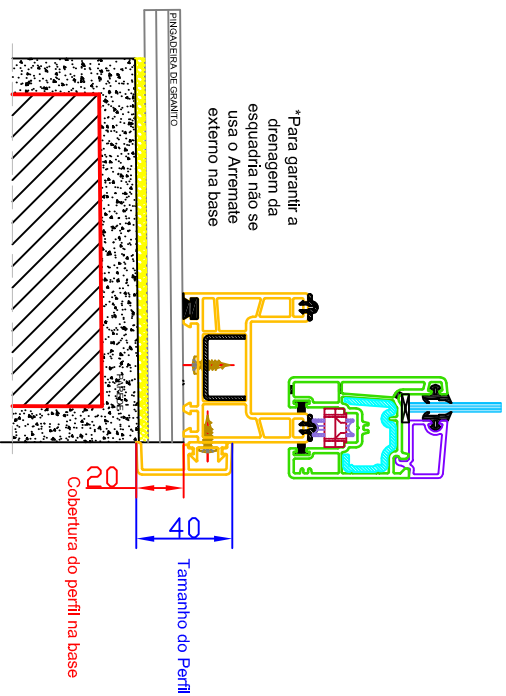
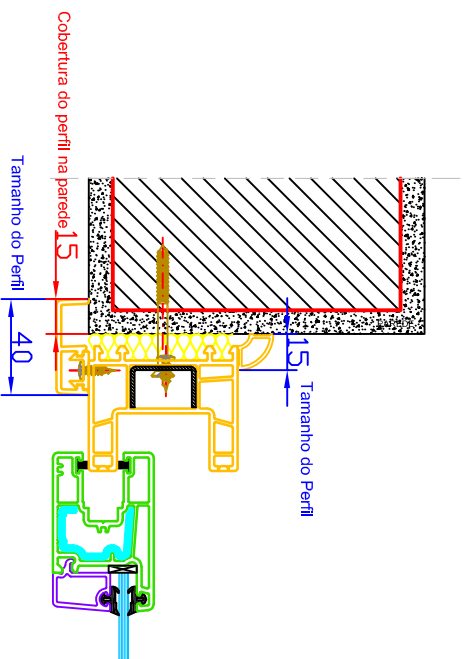
Faceamento Interno com Arremate de click interno

MEDIDAS EM MILÍMETROS



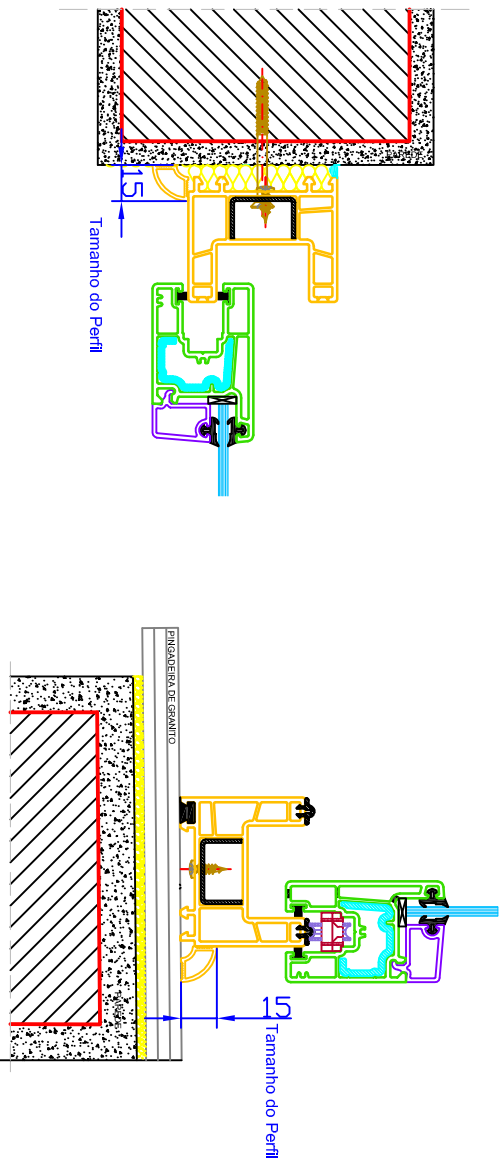
Faceamento Interno com Arremate de click interno e $\frac{1}{4}$ cana Externo

MEDIDAS EM MILÍMETROS



Faceamento Interno com Arremate $\frac{1}{4}$ cana interno

MEDIDAS EM MILÍMETROS



Faceamento no Eixo com Arremate $\frac{1}{4}$ cana interno e Externo

MEDIDAS EM MILÍMETROS

